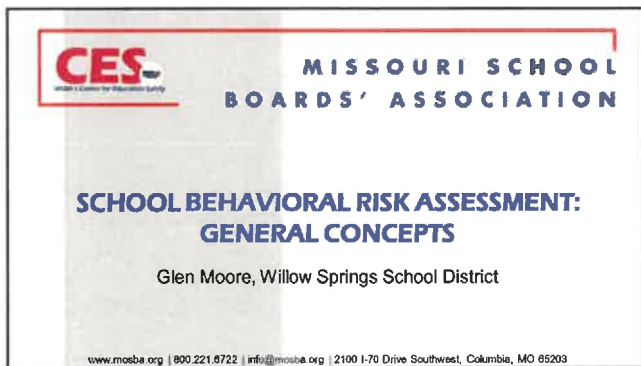
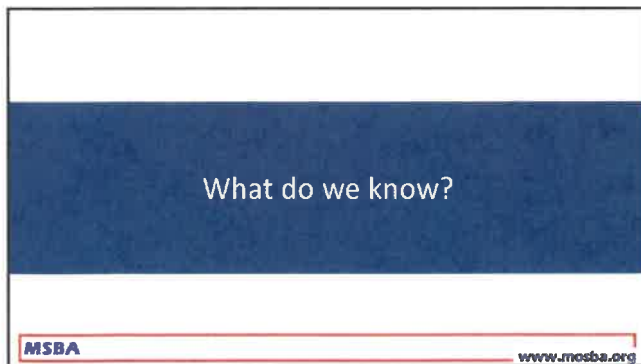


1



2



3

The Final Report and Findings of the Safe School Initiative

- Conducted by the US Secret Service and Department of Education
- Patterned after the Secret Service's Exceptional Case Study Project (ECSP)



- Essentials of School Threat Assessment (CSSRC) based on the Safe School Initiative
- Latest report from the US Secret Service released in 2019

MSBA

www.msba.org

4

Safe School Initiative Key Findings



- Incidents of targeted violence at school rarely were sudden, impulsive acts.
- Most attackers did not threaten their targets directly prior to advancing the attack.

MSBA

www.msba.org

5

Safe School Initiative Key Findings



- Most attackers engaged in some behavior prior to the incident that caused others concern or indicated a need for help.

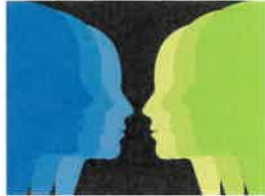
MSBA

www.msba.org

6

Safe School Initiative Key Findings

There is no accurate or useful "profile" of students who engaged in targeted school violence.



MSBA

www.msba.org

7

Safe School Initiative Key Findings



Many attackers felt bullied, persecuted, or injured by others prior to the attack.

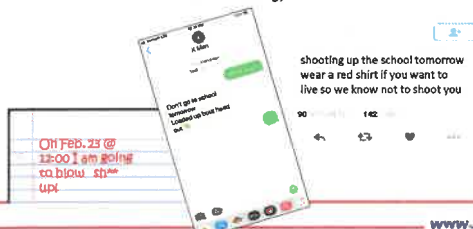
MSBA

www.msba.org

8

Safe School Initiative Key Findings

Prior to most incidents, other people knew about the attacker's idea and/or plan to attack. (*leakage or broadcasting*)



MSBA

www.msba.org

9

Safe School Initiative Key Findings



Most attackers had difficulty coping with significant losses or personal failures.

Moreover, many had considered or attempted suicide.

MSBA

www.msba.org

10

Safe School Initiative Key Findings

Most attackers had access to and had used weapons prior to the attack.

(Vast majority get weapons from their own home)



MSBA

www.msba.org

11

Safe School Initiative Key Findings

In many cases, other students were involved in some capacity.



MSBA

www.msba.org

12

Safe School Initiative Key Findings



Despite prompt law enforcement responses, most shooting incidents were stopped by means other than law enforcement intervention.

MSBA

www.mosba.org

13

Pathway to Violence

Pathway to Workplace and Campus Targeted or Intended Violence



MSBA

www.mosba.org

14

What to be watching for?

MSBA


www.mosba.org

15

Behaviors & Circumstances of Concern

Motives

- Revenge
- Yearning for attention
- Wish to solve a problem
- Desire to die/be killed, (*increased recklessness*)*
- History of perceived grievances



Be aware of changes in, and clusters of, these behaviors.

MSBA www.msba.org

16

Behaviors & Circumstances of Concern

Current life information

- Quality of relationships and support
- Recent losses or loss of status
- Current grievances or grudges
- Perception of being treated unfairly
- Difficulty coping
- "Downward" progression in functioning
- Hopelessness, desperation, and/or despair
- Pending crises or change in circumstances
- Interest in weapons

Be aware of changes in, and clusters of, these behaviors.

MSBA www.msba.org

17

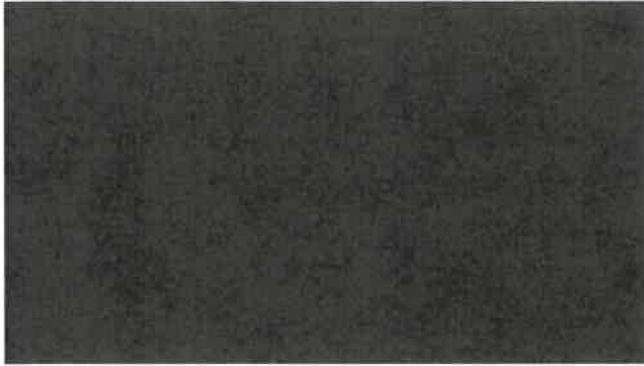
Behaviors & Circumstances of Concern

Attack Related

- Plans about injuring self or others
- Communications suggesting unusual interest in school attacks
- Comments expressing the student is considering an attack
- Recent weapon-seeking behavior (*and/or other tactical paraphernalia*)
- Communications suggesting the student condones or is considering violence* (*dehumanization & desensitization*)
- Rehearsals of attacks* (*skill set building*)

MSBA www.msba.org

18



19

A **threat** is an expression of intent to do harm or act out violently against someone or something (spoken, written or symbolic).

<p>Direct</p> <ul style="list-style-type: none"> ➤ Specific target mentioned ➤ Straightforward, clear, and explicit 	<p>Veiled</p> <ul style="list-style-type: none"> ➤ Hints at a possible act ➤ Listener must interpret meaning
<p>Indirect</p> <ul style="list-style-type: none"> ➤ Vague, unclear, ambiguous ➤ Act could occur 	<p>Conditional</p> <ul style="list-style-type: none"> ➤ Act will happen unless certain conditions or terms are met ➤ Designed to gain compliance of listener

MSBA www.msba.org

20

Writing in Classrooms or Journals

Well, since I am not welcome in Borora, I should go on a shooting rampage. By doing this I kill 713 members of my school and also 21 of the staff members. After this I decide my life is not worth living so Borora should be destroyed.

-written by a 9th grader

MSBA www.msba.org

21

Writings
(School Assignments & Social Media)

Status
 Photo / Video
 Offer, Event +

My father has three guns. I'm planning on killing him first and putting him in a dumpster.

Then I'm taking the motor and I'm going in fast. I'm gonna kill hopefully at least 200 before I kill myself.


So you want to tell the deputy, I'm on my way, I'm killing 200 people minimum at school. I will be on CNN.

Post


MSBA www.mosba.org

22

Symbolic and Artistic



-gesture by Tom, American icon



-drawing by Rick, 10th grade

MSBA www.mosba.org

23

Making vs. Posing a Threat

- ❖ Some students who make threats ultimately pose threats
- ❖ Many students who make threats do not pose threats
- ❖ Some students who pose threats never make threats
- ❖ **Implication: All threats must be taken seriously; threats are not a necessary condition to initiate an inquiry or preliminary evaluation**

MSBA www.mosba.org

24

How to report?

MSBA www.msba.org

25

Consider the following...

- If the threat is of an immediate nature, contact law enforcement (911). District safety and security should also be contacted utilizing whatever alert processes/tools are in place, e.g. panic alarm, radio. Be direct with your concerns!
- If the threat is not imminent, report to your supervisor, the Behavioral Risk Assessment Team, safety/security staff or law enforcement. Be direct with your concerns!
- FERPA (Family Educational Rights and Privacy Act) allows this through a 2008 exception, as long as the reporter is acting "to protect the health and safety of a student or other individual."
- Courage2Report is an option but using an anonymous system (as a school professional), will hamper response to the threat as the Behavioral Risk Assessment Team will not have direct access to you as the reporting party and may also have impacts on you as a mandatory reporter.

MSBA www.msba.org

26

Sample School Staff Referral Guide for Student Issues

Sample School Staff Referral Guide for Student Issues

What is the issue?	Submit Referral Address	Comments
<ul style="list-style-type: none"> • Child Abuse/Neglect • Child Molestation • Physical and Other Abuse or Neglect • Sexual Abuse/Neglect 	<p>Report Child Abuse/Neglect, Child Molestation, Physical and Other Abuse or Neglect, and Sexual Abuse/Neglect to your supervisor, the Behavioral Risk Assessment Team, safety/security staff or law enforcement. Be direct with your concerns!</p> <p>Report Child Molestation, Physical and Other Abuse or Neglect, and Sexual Abuse/Neglect to your supervisor, the Behavioral Risk Assessment Team, safety/security staff or law enforcement. Be direct with your concerns!</p>	<p>Report on emergency status to allow for the immediate response, including law enforcement, to the school site. Report to the appropriate agency. Do not wait for a response from the school. Report to the appropriate agency. Do not wait for a response from the school.</p>
<ul style="list-style-type: none"> • Child Molestation • Physical and Other Abuse or Neglect • Sexual Abuse/Neglect 	<p>Report Child Molestation, Physical and Other Abuse or Neglect, and Sexual Abuse/Neglect to your supervisor, the Behavioral Risk Assessment Team, safety/security staff or law enforcement. Be direct with your concerns!</p>	<p>Report on emergency status to allow for the immediate response, including law enforcement, to the school site. Report to the appropriate agency. Do not wait for a response from the school.</p>
<ul style="list-style-type: none"> • Child Abuse/Neglect • Child Molestation • Physical and Other Abuse or Neglect • Sexual Abuse/Neglect 	<p>Report Child Abuse/Neglect, Child Molestation, Physical and Other Abuse or Neglect, and Sexual Abuse/Neglect to your supervisor, the Behavioral Risk Assessment Team, safety/security staff or law enforcement. Be direct with your concerns!</p>	<p>Report on emergency status to allow for the immediate response, including law enforcement, to the school site. Report to the appropriate agency. Do not wait for a response from the school.</p>

MSBA www.msba.org

27

How you might be asked to help?
 Response, Management, and Support (RMS) Plan



- Protect and aid possible targets
- Provide support and guidance to the student
- Monitor the student short and long term
- Connect student to services and support systems
- Provide management of the situation

MSBA www.mosba.org

28

What now?
 (Resources)

MSBA www.mosba.org

29

COURAGE2REPORT:
 Missouri's Statewide School Safety Threat Reporting System



Online: WWW.COURAGE2REPORTMO.COM 
 Call: 866-743-7047

MSBA www.mosba.org

30

COURAGE2REPORT: Missouri's Statewide School Safety Threat Reporting System

ENCOURAGE REPORTING

EVERYONE: Students, Parents, ALL School Staff, Community Members

THEY NEED TO KNOW:

- ✓ YOU WANT TO KNOW ABOUT SAFETY CONCERNS
- ✓ WHAT TO REPORT
- ✓ HOW TO REPORT
- ✓ THAT YOU WILL RESPOND



MSBA www.mosba.org

31

COURAGE2REPORT: Missouri's Statewide School Safety Threat Reporting System

WHAT TO REPORT

- Students
 - Alcohol Use
 - Animal Abuse
 - Assault
 - Bomb Threat
 - Bullying
 - Child Abuse
 - Cyber Bullying
 - Depression
 - Discrimination
 - Distribution of Inappropriate Photos
 - Drug Use
 - Explosives
 - Fighting
- Parents
- Community
 - Guns
 - Harassment
 - Hazing
 - Human Trafficking
 - Inappropriate Communication With School Staff
 - Inappropriate/Unwanted Touching
 - Knife
 - Plan to Attack School
 - School Shooting Threat
 - Self Harm
 - Sexual Offense
 - Suicidal Thoughts
 - Threat to Kill Other Person

MSBA www.mosba.org

32

COURAGE2REPORT: Missouri's Statewide School Safety Threat Reporting System

HOW TO REPORT

- Tell Any Trusted Adult
- School Tip Line
- Courage2Report
 - MSIP 6: The school system ensures access to Missouri's school violence anonymous reporting tip line.

MSBA www.mosba.org

33

COURAGE2REPORT: Missouri's Statewide School Safety Threat Reporting System

TRAIN AND PROMOTE COURAGE2REPORT


- PROMOTE ALL REPORTING MECHANISMS
- COURAGE2REPORT
 - No one will know - it's an anonymous reporting system
 - Someone could be hurt or injured -- break the code of silence.
 - Courage2Report is available to all
 - Advertise and promote Courage2Report
 - Throughout academic year and during breaks
 - Morning announcements
 - School news bulletins
 - Email blasts
 - Email signature lines
 - School website

MSBA www.mosba.org


34

COURAGE2REPORT: Missouri's Statewide School Safety Threat Reporting System

For questions, please go to:
<http://www.mshp.dps.missouri.gov/MSHPPWeb/Courage2ReportMO/Index.html>



To Make a Report:


Online: WWW.COURAGE2REPORTING.COM 
 Call: 888-748-7847

MSBA www.mosba.org

35

THANK YOU

FOR ALL YOU DO FOR STUDENTS!



MSBA www.mosba.org

36

We would like to thank the Colorado School Safety Resource Center for providing the foundation of this presentation.



MSBA

www.mosba.org

37



MISSOURI SCHOOL
BOARDS' ASSOCIATION

Center for Education Safety

573-638-7501 ext. 420 | 800-221-6722

ces@mosba.org

2100 I-70 Drive Southwest
Columbia, MO 65203

www.mosba.org

Twitter: @MissouriSBA | Facebook: @moschoolboards | #2020MSBA

38
